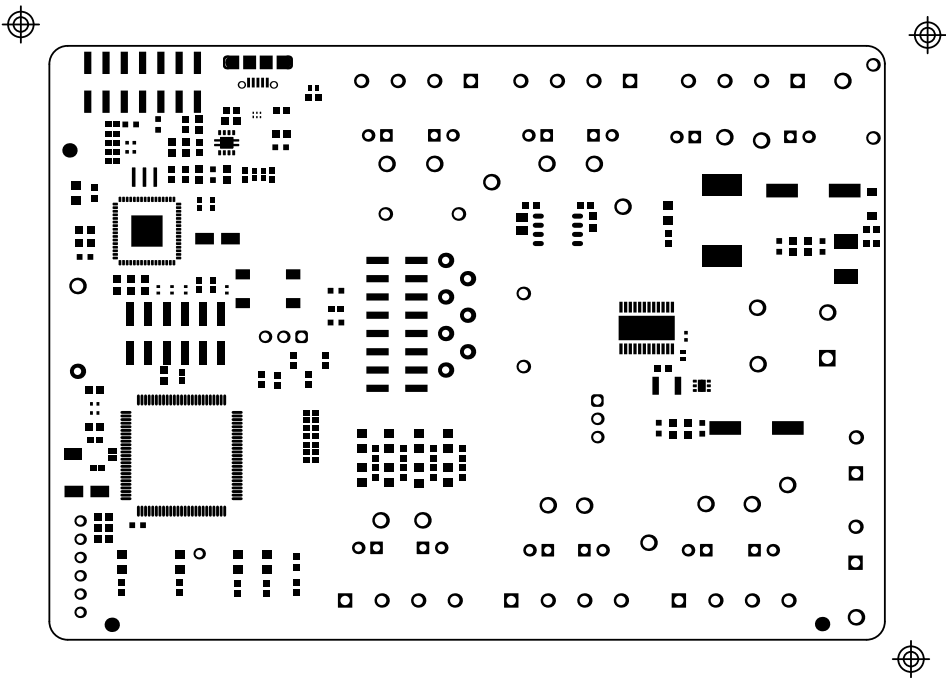
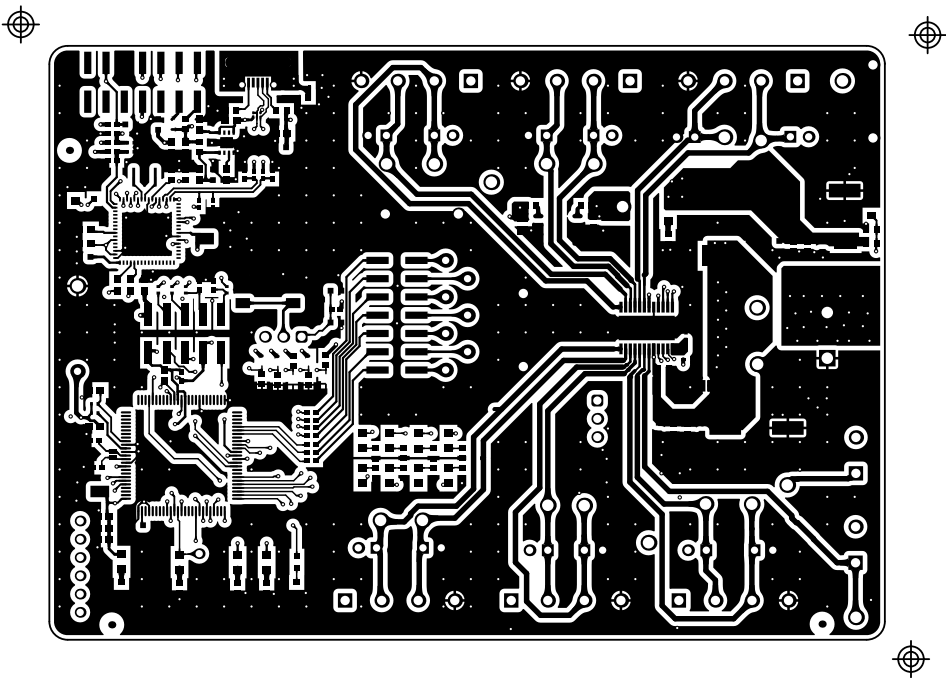


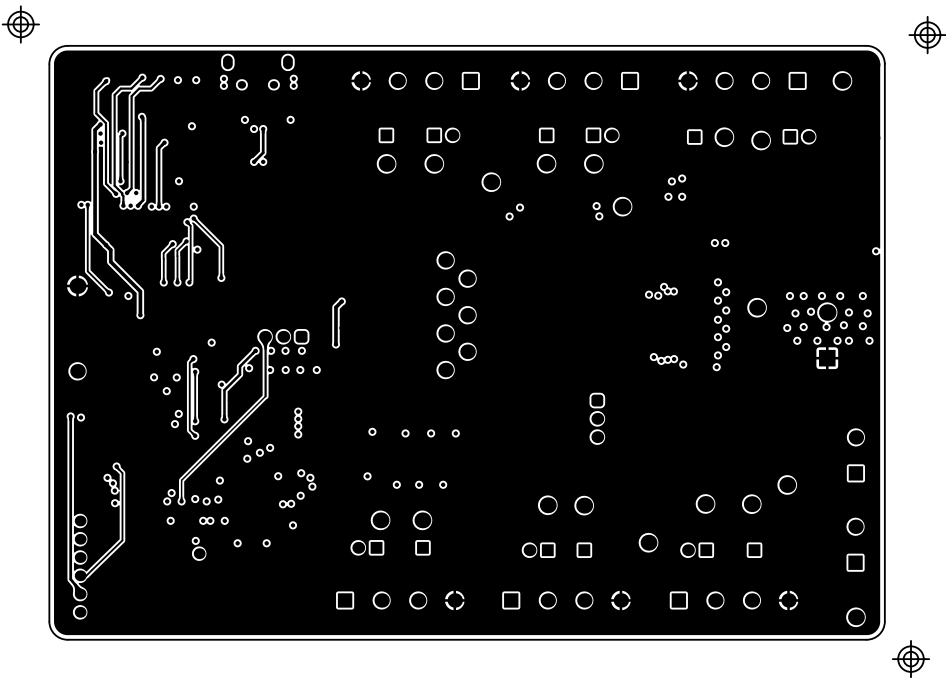
ALL ARTWORK VIEWED FROM TOP SIDE	BOARD #:DRV81602Q1_EVM	REV: B	SUN REV: d3e5e85679f7625cfa73d7b3a310365a04ec3569 [Locally Modified]
LAYER NAME = Top Overlay	TID #: N/A		
PLOT NAME = Top Overlay	GENERATED : 7/16/2024	1:58:04 PM	TEXAS INSTRUMENTS



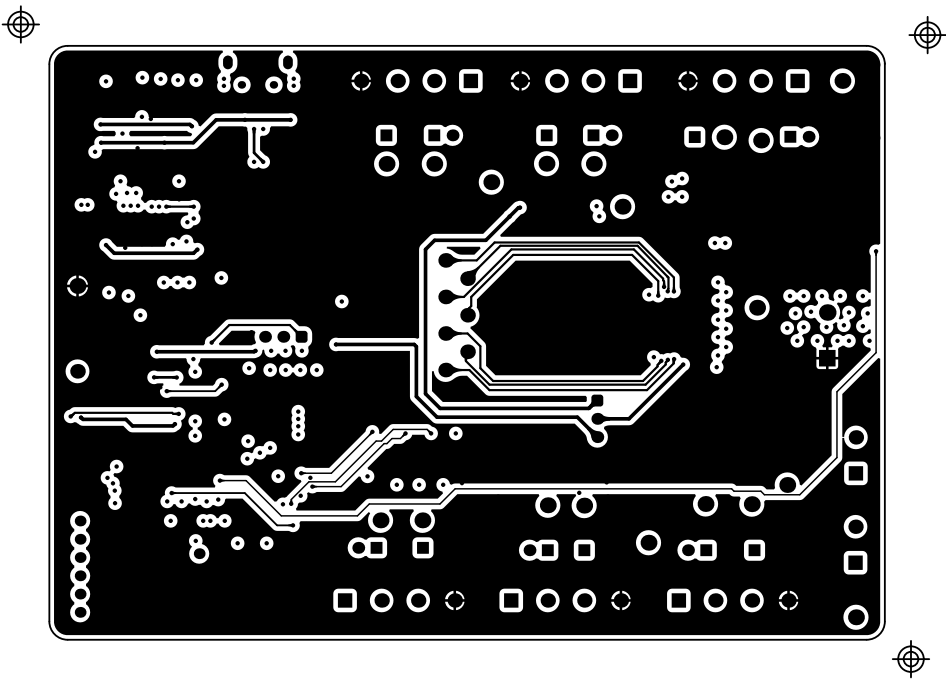
ALL ARTWORK VIEWED FROM TOP SIDE	BOARD #:DRU81602Q1_EVM	REV: B	SUN REV: d3e5e85679f7625cfa73d7b3a310365a04ec3569 [Locally Modified]
LAYER NAME = Top Solder	TID #: N/A		
PLOT NAME = Top Solder Mask	GENERATED : 7/16/2024	1:58:05 PM	TEXAS INSTRUMENTS



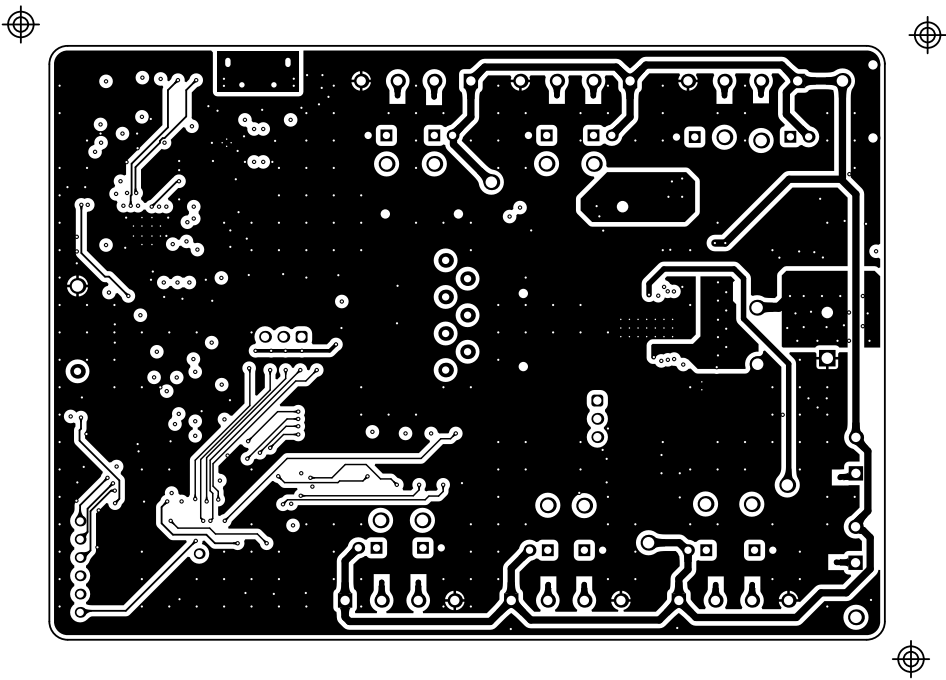
ALL ARTWORK VIEWED FROM TOP SIDE	BOARD #:DRV81602Q1_EVM	REV: B	SUN REV: d3e5e85679f7625cfa73d7b3a310365a04ec3569 [Locally Modified]
LAYER NAME = Top Layer	TID #: N/A		
PLOT NAME = Top Layer	GENERATED : 7/16/2024	1:58:05 PM	TEXAS INSTRUMENTS



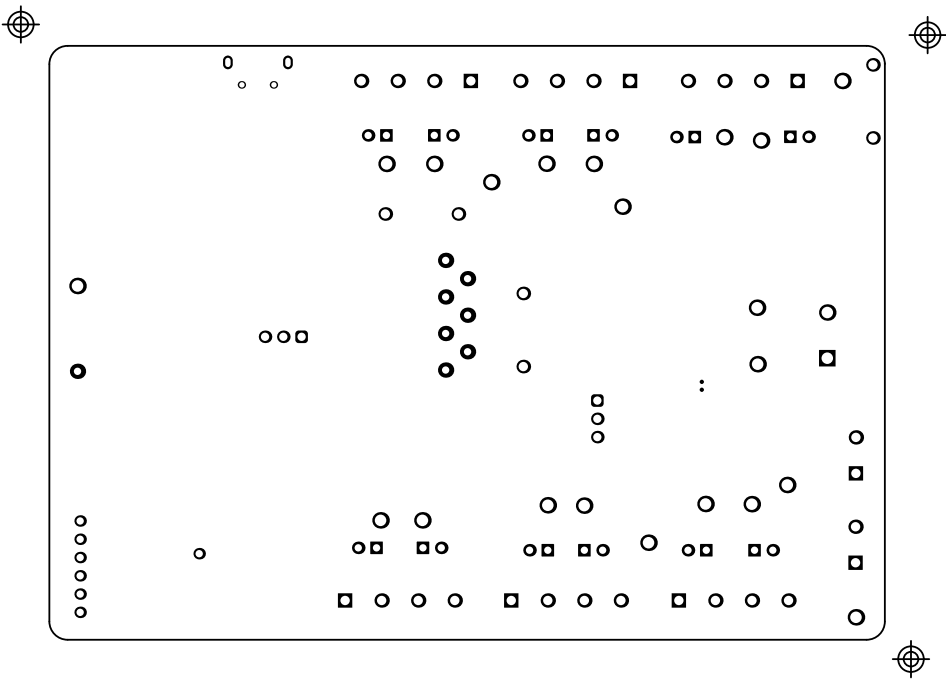
ALL ARTWORK VIEWED FROM TOP SIDE	BOARD #:DRV81602Q1_EVM	REV: B	SUN REV: d3e5e85679f7625cfa73d7b3a310365a04ec3569 [Locally Modified]
LAYER NAME = Signal Layer 1	TID #: N/A		
PLOT NAME = Signal 1	GENERATED : 7/16/2024	1:58:06 PM	TEXAS INSTRUMENTS



ALL ARTWORK VIEWED FROM TOP SIDE	BOARD #:DRV81602Q1_EVM	REV: B	SUN REV: d3e5e85679f7625cfa73d7b3a310365a04ec3569 [Locally Modified]
LAYER NAME = Signal Layer 2	TID #: N/A		
PLOT NAME = Signal 2	GENERATED : 7/16/2024	1:58:06 PM	TEXAS INSTRUMENTS



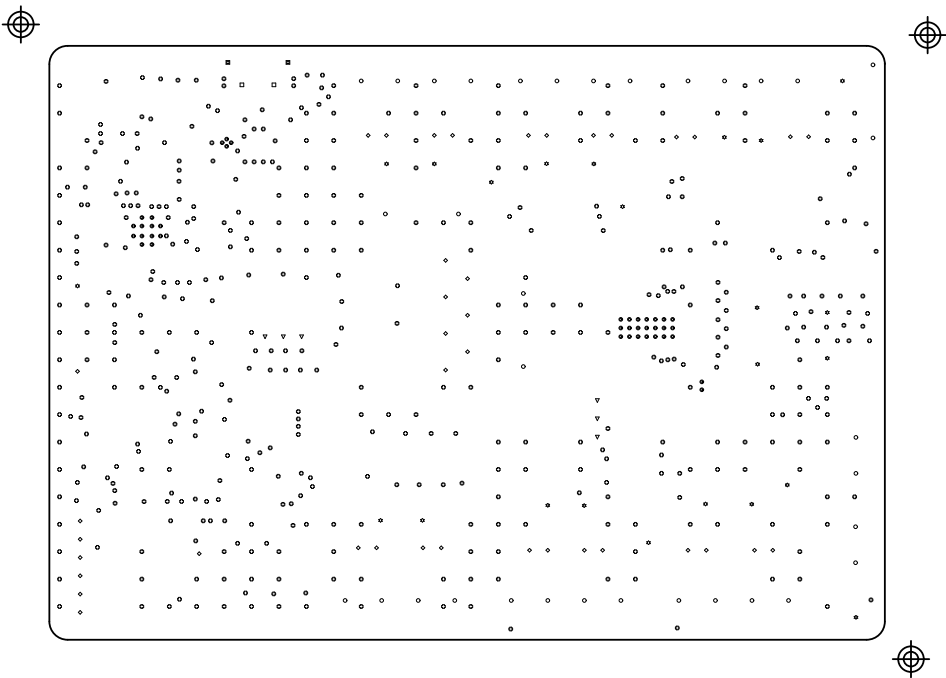
ALL ARTWORK VIEWED FROM TOP SIDE	BOARD #:DRV81602Q1_EVM	REV: B	SUN REV: d3e5e85679f7625cfa73d7b3a310365a04ec3569 [Locally Modified]
LAYER NAME = Bottom Layer	TID #: N/A		
PLOT NAME = Bottom Layer	GENERATED : 7/16/2024	1:58:06 PM	TEXAS INSTRUMENTS



ALL ARTWORK VIEWED FROM TOP SIDE	BOARD #:DRU81602Q1_EVM	REV: B	SUN REV: d3e5e85679f7625cfa73d7b3a310365a04ec3569 [Locally Modified]
LAYER NAME = Bottom Solder	TID #: N/A		
PLOT NAME = Bottom Solder Mask	GENERATED : 7/16/2024 1:58:07 PM	TEXAS INSTRUMENTS	



ALL ARTWORK VIEWED FROM TOP SIDE	BOARD #: DRU81602Q1_EUM	REV: B	SVN REV: d3e5e85679f7625cfa73d7b3a310365a04ec3569 [Locally Modified]
LAYER NAME = Bottom Overlay	TID #: N/A		
PLOT NAME = Bottom Overlay	GENERATED : 7/16/2024 1:58:07 PM	TEXAS INSTRUMENTS	

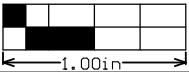
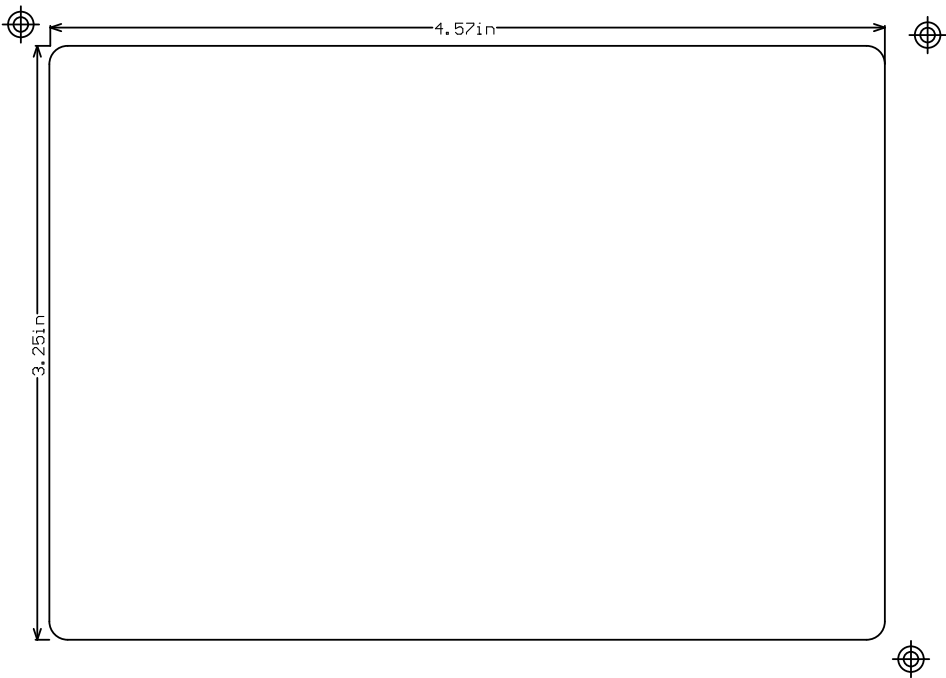


Drill Drawing :

Symbol	Quantity	Finished Hole Size	Plated	Hole Type	Drill Layer Pair	Hole Tolerance	Routed Path Length	Hole Length
⊙	39	7.87mil (0.200mm)	PTH	Round	Top Layer - Bottom Layer	+3mil/-3mil	-	-
⊖	160	12.00mil (0.305mm)	PTH	Round	Top Layer - Bottom Layer	-	-	-
□	2	29.53mil (0.750mm)	PTH	Round	Top Layer - Bottom Layer	-	-	-
◇	39	40.00mil (1.016mm)	PTH	Round	Top Layer - Bottom Layer	+3mil/-3mil	-	-
▽	6	45.28mil (1.150mm)	PTH	Round	Top Layer - Bottom Layer	+3mil/-3mil	-	-
○	34	51.18mil (1.300mm)	PTH	Round	Top Layer - Bottom Layer	+3mil/-3mil	-	-
☆	23	63.00mil (1.600mm)	PTH	Round	Top Layer - Bottom Layer	+3mil/-3mil	-	-
■	2	51.18mil (1.300mm)	PTH	Slot	Top Layer - Bottom Layer	+3mil/-3mil	-21.65mil (-0.550mm)	29.53mil (0.750mm)
605 Total								

Slot definitions : Routed Path Length = Calculated from tool start centre position to tool end centre position.
Hole Length = Routed Path Length + Tool Size = Slot length as defined in the PCB layout

ALL ARTWORK VIEWED FROM TOP SIDE	BOARD #:DRU81602Q1_EVM	REV: B	SUN REV: d3e5e85679f7625cfa73d7b3a310365a04ec3569 [Locally Modified]
LAYER NAME = Drill Drawing	TID #: N/A		
PLOT NAME = Drill Drawing	GENERATED : 7/16/2024 1:58:08 PM	TEXAS INSTRUMENTS	



ALL ARTWORK VIEWED FROM TOP SIDE	BOARD #:DRU81602Q1_EVM	REV: B	SUN REV: d3e5e85679f7625cfa73d7b3a310365a04ec3569 [Locally Modified]
LAYER NAME = M2 Board Dimensions	TID #: N/A		
PLOT NAME = Board Dimensions	GENERATED : 7/16/2024 1:58:09 PM	TEXAS INSTRUMENTS	